

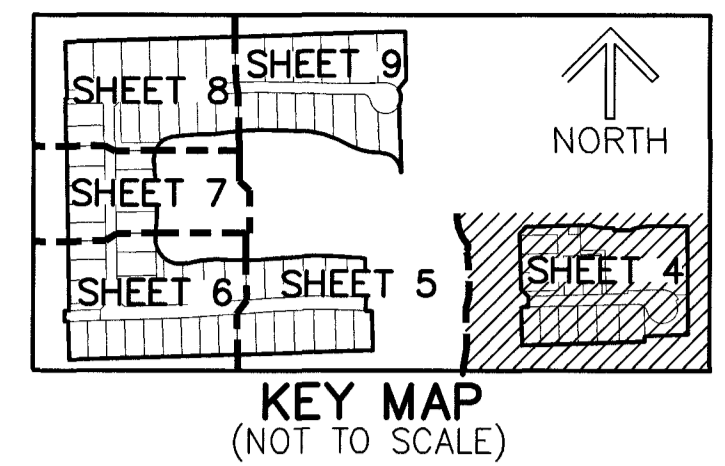
LEGEND/ABBREVIATIONS:

- P.B. - PLAT BOOK
- O.R.B. - OFFICIAL RECORDS BOOK
- PG(S) - PAGE(S)
- Δ - DELTA (CENTRAL ANGLE)
- CB - CHORD BEARING
- CD - CHORD DISTANCE
- R - RADIUS
- L - ARC LENGTH
- C - CENTERLINE
- E - EASTING (WHEN USED WITH COORDINATES)
- N - NORTHING (WHEN USED WITH COORDINATES)
- DE - DRAINAGE EASEMENT
- LME - LAKE MAINTENANCE EASEMENT
- PBCUE - PALM BEACH COUNTY UTILITY EASEMENT
- R/W - RIGHT-OF-WAY
- UE - UTILITY EASEMENT
- 12-45-41 - SECTION 12, TOWNSHIP 45 SOUTH, RANGE 41 EAST
- PUD - PLANNED UNIT DEVELOPMENT
- LWDD - LAKE WORTH DRAINAGE DISTRICT
- LSE - LIFT STATION EASEMENT
- (P) - VERDURA FARMS PUD (PLAT BOOK 140, PAGES 142-157)
- PC - POINT OF CURVATURE
- PT - POINT OF TANGENCY
- PNT - POINT OF NON-TANGENCY
- PRC - POINT OF REVERSE CURVATURE
- LB - LICENSED BUSINESS
- FOOT - FLORIDA DEPARTMENT OF TRANSPORTATION
- LOP - LIMITS OF PLAT
- NAD - NORTH AMERICAN DATUM
- PRM - PERMANENT REFERENCE MONUMENT
- FPL - FLORIDA POWER & LIGHT COMPANY
- PRM - DENOTES SET PERMANENT REFERENCE MONUMENT 4"x 4"x 24" CONCRETE MONUMENT WITH ALUMINUM DISK STAMPED "C&W PRM LB3591", UNLESS OTHERWISE NOTED
- PCP - DENOTES SET PERMANENT CONTROL POINT NAIL AND METAL DISK STAMPED "PCP LB3591"
- ▲ - DENOTES SET PERMANENT REFERENCE MONUMENT NAIL AND DISC STAMPED "PRM" LB 3591

VERDURA FARMS, PUD PLAT 2

BEING A REPLAT OF ALL OF PARCELS A, B AND C, VERDURA FARMS PUD, ACCORDING TO THE PLAT THEREOF, AS RECORDED IN PLAT BOOK 140, PAGES 142 THROUGH 157 OF THE PUBLIC RECORDS OF PALM BEACH COUNTY, FLORIDA, LYING IN SECTION 12, TOWNSHIP 45 SOUTH, RANGE 41 EAST, PALM BEACH COUNTY, FLORIDA.

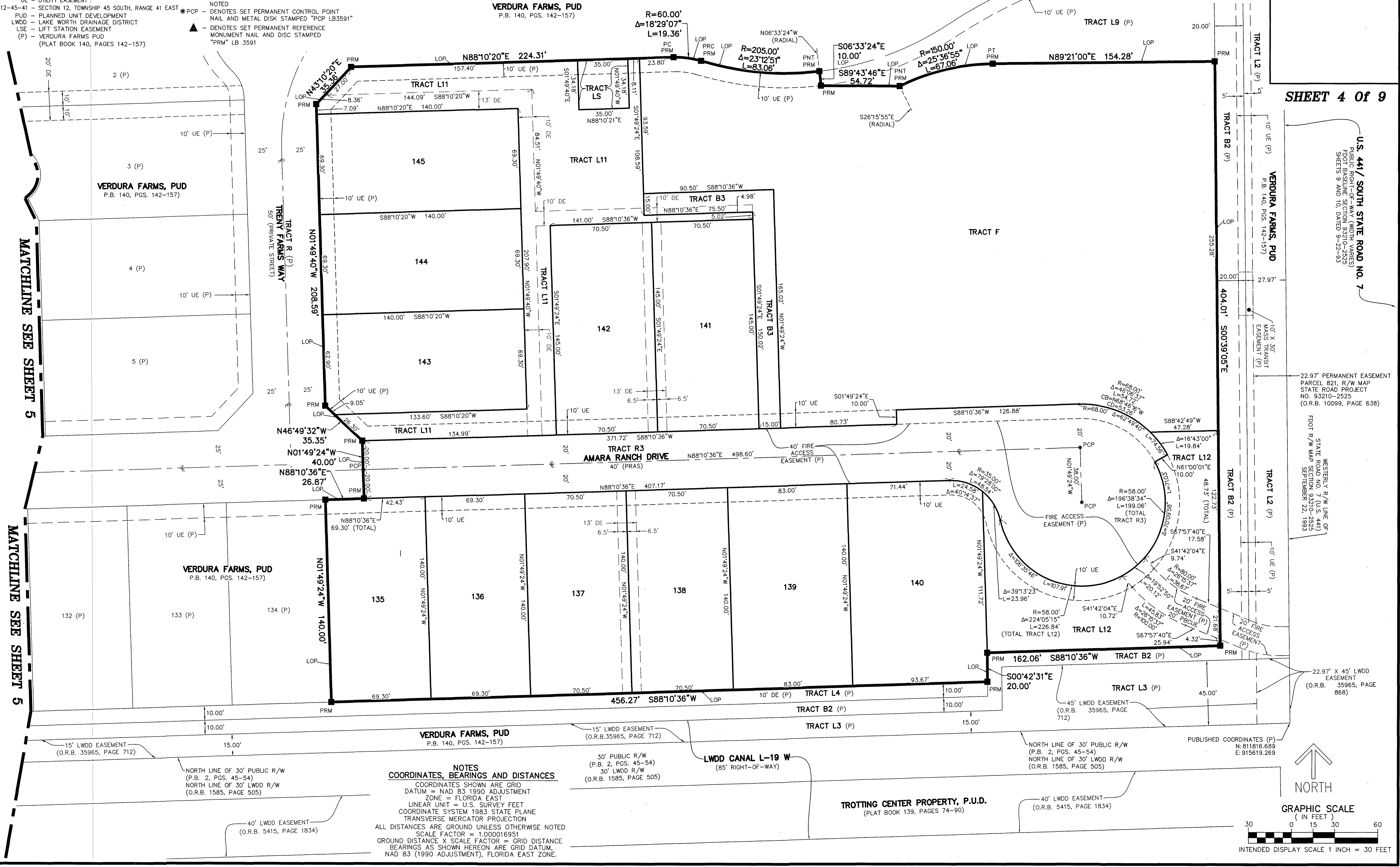
THIS INSTRUMENT PREPARED BY
 DAVID P. LINDLEY
 OF
CAULFIELD & WHEELER, INC.
 SURVEYORS - ENGINEERS - PLANNERS
 7900 GLADES ROAD, SUITE 100
 BOCA RATON, FLORIDA 33434 - (561)392-1991



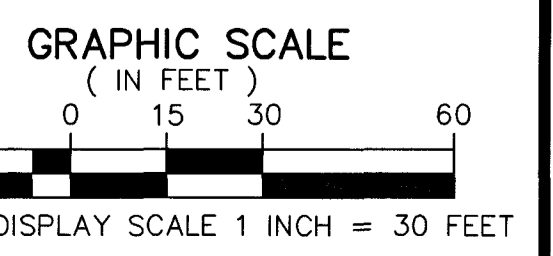
6

SHEET 4 Of 9

U.S. 441 / SOUTH STATE ROAD NO. 7
 PUBLIC RIGHT-OF-WAY (WIDTH VARIES)
 FOOT BASELINE SECTION 9, 2010-2525
 SHEETS 9 AND 10, DATED 9-22-93



NOTES
COORDINATES, BEARINGS AND DISTANCES
 COORDINATES SHOWN ARE GRID
 DATUM = NAD 83 1990 ADJUSTMENT
 ZONE = FLORIDA EAST
 LINEAR UNIT = U.S. SURVEY FEET
 COORDINATE SYSTEM 1983 STATE PLANE
 TRANSVERSE MERCATOR PROJECTION
 ALL DISTANCES ARE GROUND UNLESS OTHERWISE NOTED
 SCALE FACTOR = 1.000016951
 GROUND DISTANCE X SCALE FACTOR = GRID DISTANCE
 BEARINGS AS SHOWN HEREON ARE GRID DATUM,
 NAD 83 (1990 ADJUSTMENT), FLORIDA EAST ZONE.



22.97' PERMANENT EASEMENT
 PARCEL 821, R/W MAP
 STATE ROAD PROJECT
 NO. 93210-2525
 (O.R.B. 10099, PAGE 638)

STATE ROAD PROJECT
 SECTION 9, 2010-2525
 SEPTEMBER 22, 1993

WESTERLY R/W LINE OF
 STATE ROAD PROJECT
 SECTION 9, 2010-2525

22.97' X 45' LWDD EASEMENT
 (O.R.B. 35965, PAGE 868)

PUBLISHED COORDINATES (P)
 N: 811816.689
 E: 915619.269

NORTH